

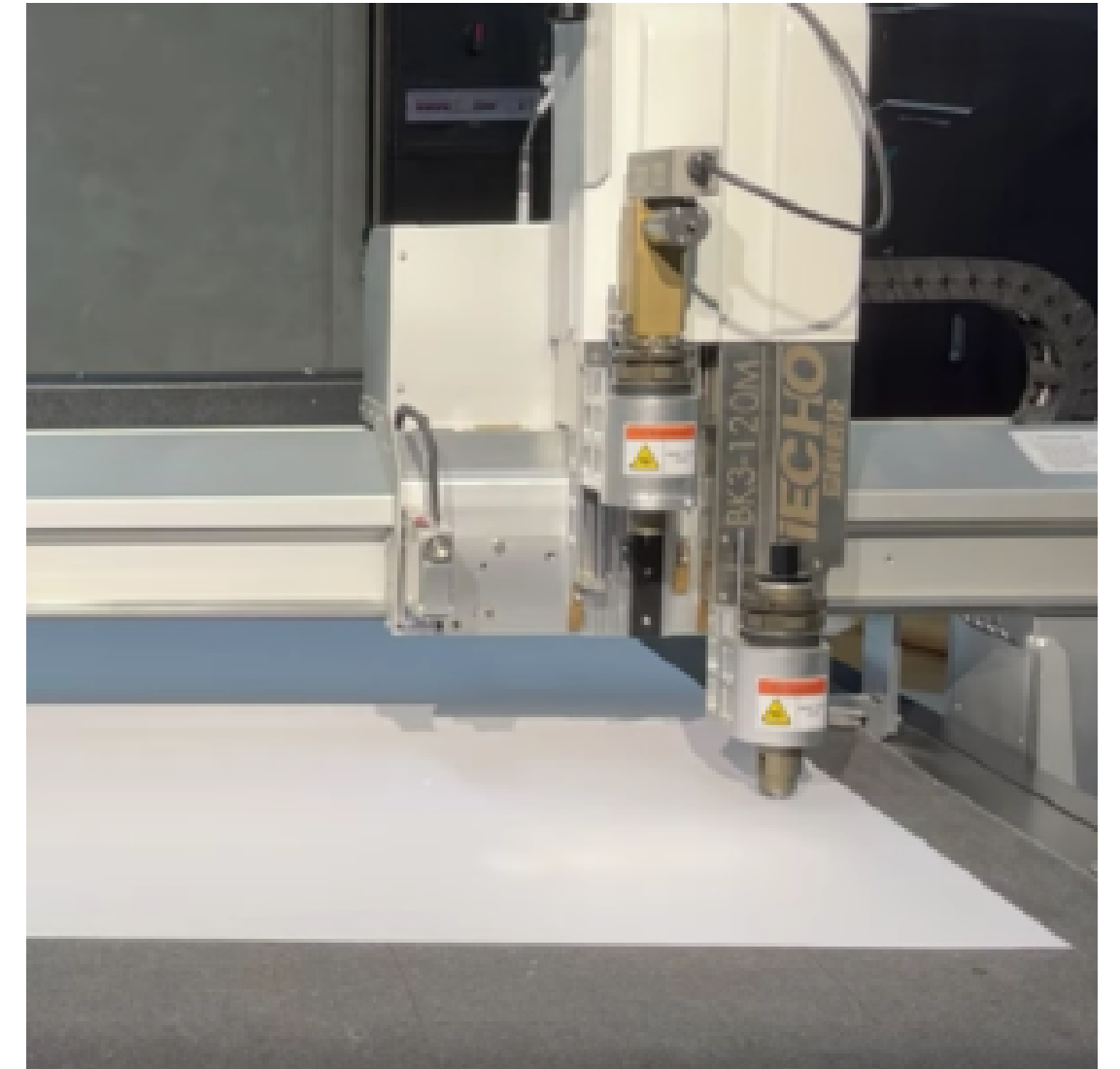


IECHO cutting tools universal



BASIC CUTTING HEAD EQUIPMENT

1. Notch and Punching Tool (PPT): make *V* or * — *Notch and holes punching



Related video link on Youtube:

<https://youtu.be/AGNNWGd4aaY?si=ngeDPPaMAxRxeOdJ>

Rigo d.o.o., Komen 59, 6223 Komen, Slovenija Tel.: +386 05 73 18 510
www.rigo.si | info@rigo.si



www.rigo-cutcam.si

“Over 35 years of experience. Trusted by global companies – why not by you as well?”

2. **Pen:** for marking on the materials



Related video link on Youtube:

https://youtu.be/Ow_3FKS_jCc?si=Xfme-xLoYUWi_868

Rigo d.o.o., Komen 59, 6223 Komen, Slovenija Tel.: +386 05 73 18 510

www.rigo.si | info@rigo.si



www.rigo-cutcam.si

“Over 35 years of experience. Trusted by global companies – why not by you as well?”

BASIC CUTTING HEAD EQUIPMENT

3. **UCT** : Standard cutting tool by dragging tangent knife, fast speed, for cutting paper, cardboard, thin pvc etc.



IECHO UCT

Related video link on Youtube:

<https://youtu.be/zfNQoNfg4sI?si=1INaiBWp1SQzI5TP>

Rigo d.o.o., Komen 59, 6223 Komen, Slovenija Tel.: +386 05 73 18 510
www.rigo.si | info@rigo.si



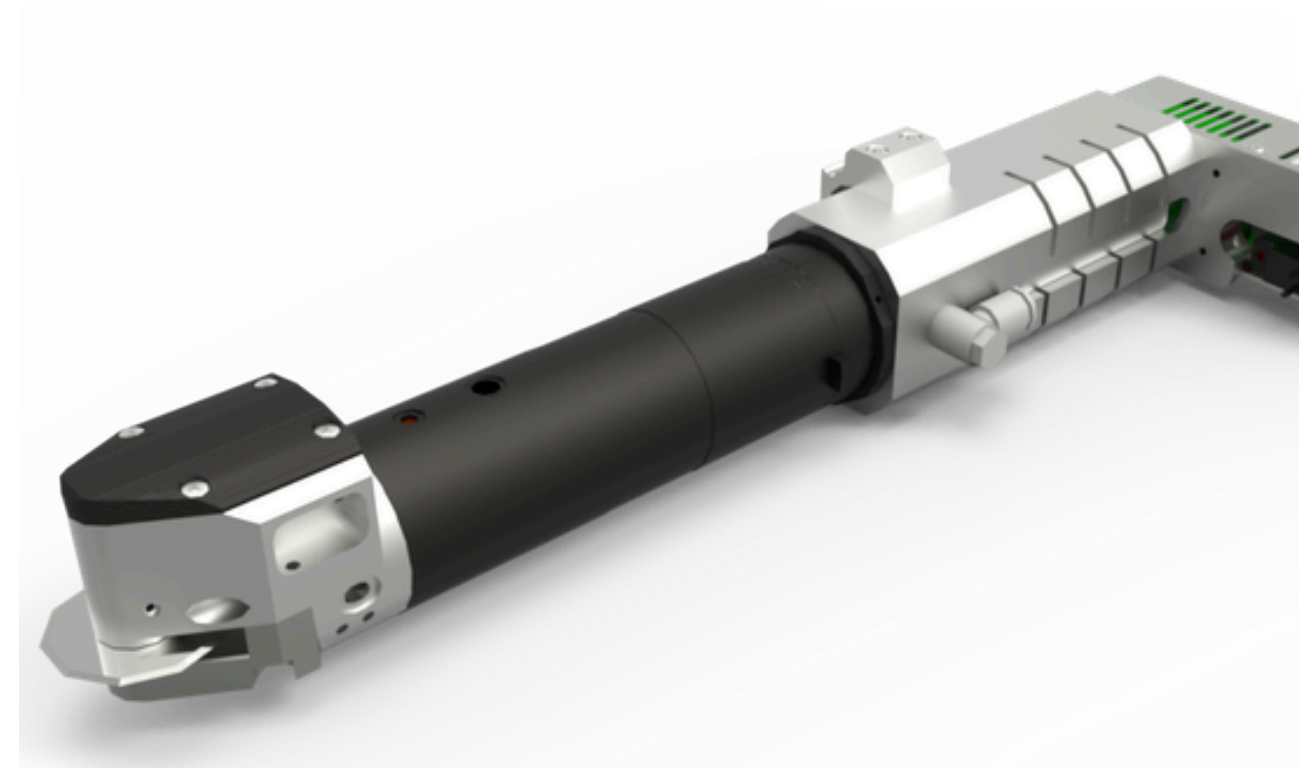
www.rigo-cutcam.si

“Over 35 years of experience. Trusted by global companies – why not by you as well?”



OPTIONAL ACCESSORIES

IECHO PRT: is Powerful Driven Rotary Tool , with a with a robust Servo motor and Driver, enable it to work reliably, cutting hard materials with strong force and high speed. It is widely used for cutting various fabric, PVC, carpets, mats, PU leather, foams, gasket fiber glass, Goroteks , ballistic material etc.



Related video link on Youtube:

<https://www.youtube.com/watch?v=VHYKHN5r2N4>

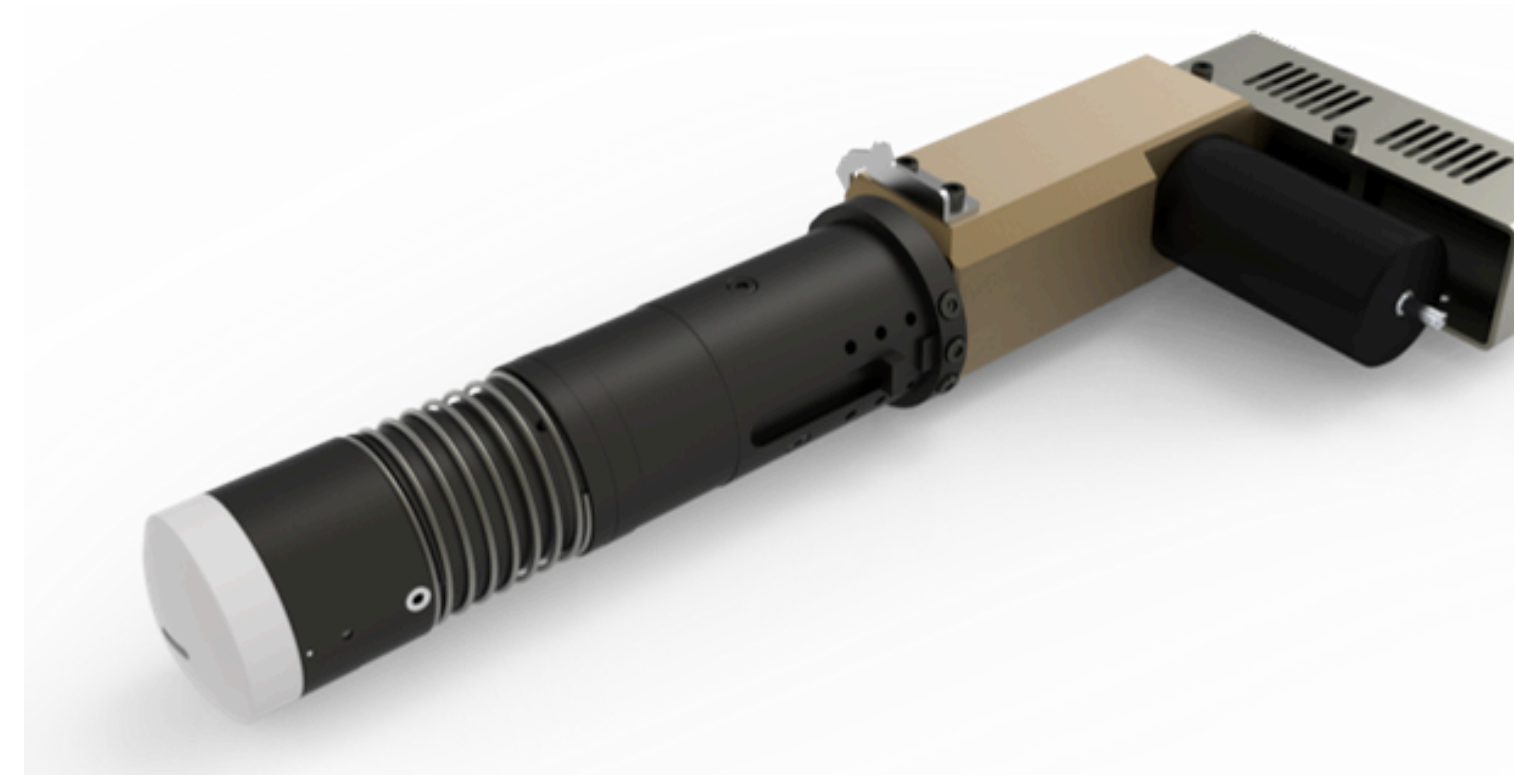
Rigo d.o.o., Komen 59, 6223 Komen, Slovenija Tel.: +386 05 73 18 510
www.rigo.si | info@rigo.si



www.rigo-cutcam.si

“Over 35 years of experience. Trusted by global companies – why not by you as well?”

IECHO EOT: the electric oscillating tool needed for cutting relatively thicker and medium-density materials. With a servo motor inside the tool, the power of EOT is 80 watt with 18000 rpm, and also with a stroke of 1mm, it can reduce the resistance to the blade and can satisfy cutting those materials. The relative cutting materials are such as KT board, Chevron board and corrugated board.



Related video link on Youtube:

<https://www.youtube.com/watch?v=ssqsnjlww7o&t=2s>



IECHO UCT: also can be named as drag knife, which is more vivid, because its working principle is the moving beam drags the cutting tool to move on the material, thus to cut through the material.

The tool is suitable for cutting thin paper, vinyl and card paper. Besides, for the thin plastic sheet and corrugated plastic sheet, the UCT also have a pretty cutting result.



Related video link on Youtube:

<https://www.youtube.com/watch?v=xpp6Z8nbvHE>



IECHO POT: the pneumatic oscillating tool, which means the tool is driven by the pressed air. With high frequency of 11000rpm and a stroke of 8mm, POT is specialized for cutting quite thicker and high dense materials such as rubber, foam, and gasket.

Note: the requirement for the tool:
0.6~0.8Mpa; 0.6CBM/MIN

Related video link on Youtube:

<https://www.youtube.com/watch?v=ttCZRy3yKns>



IECHO RZ: the 350 W router operates at the speed up to 60,000 rpm, which is the tool for cutting rigid and hard materials such as acrylic, MDF, and aluminum composite panel.

Note: the requirement for the tool: 0.25~4Mpa; vacuum cleaner; spare felt

Related video link on Youtube:

<https://www.youtube.com/watch?v=TEuyL3Sg9gw>

<https://www.youtube.com/watch?v=sK3hfpYWynY>

<https://www.youtube.com/watch?v=XtSLKCoy9jw>

<https://www.youtube.com/watch?v=CJIMQ9W4nqk>

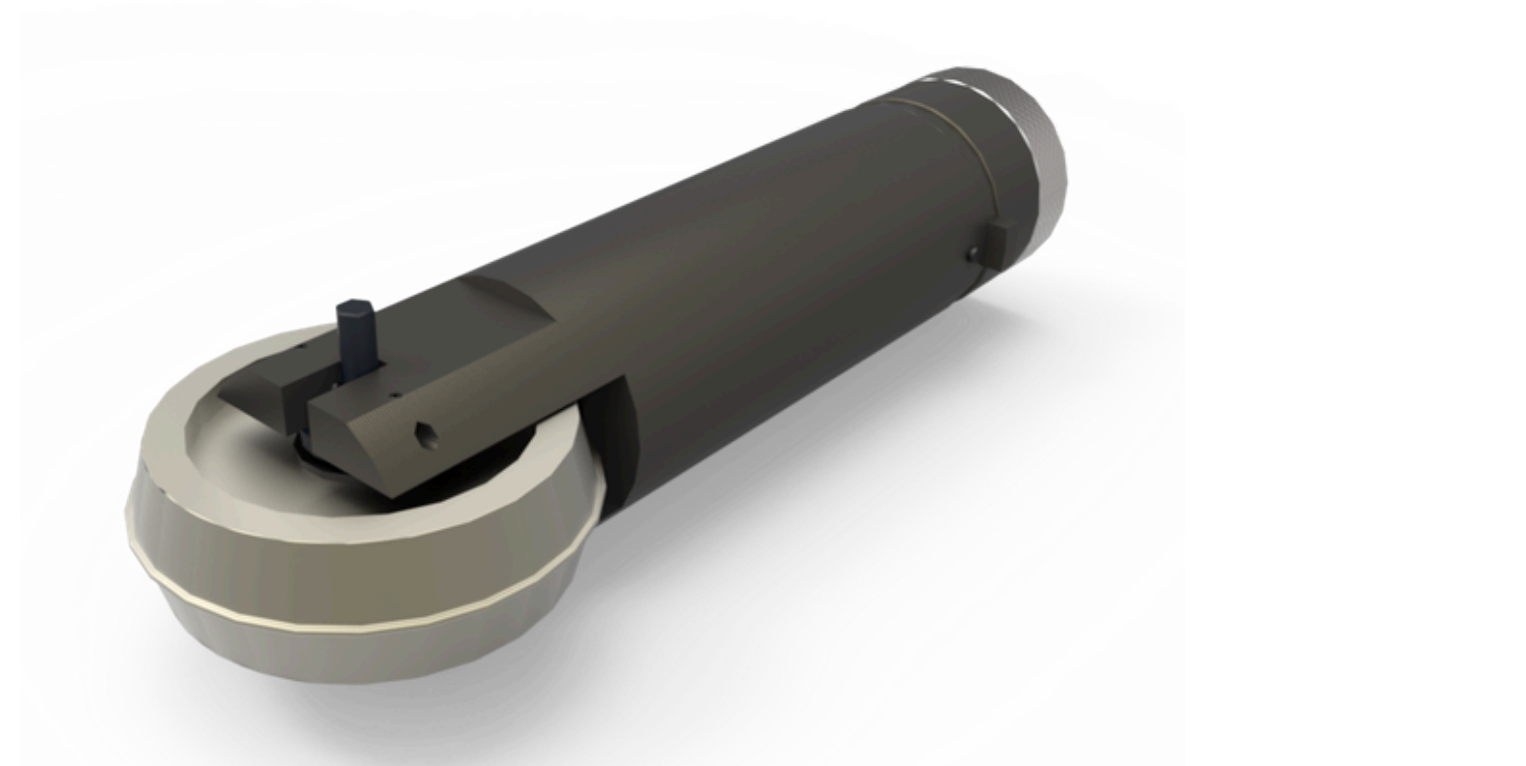


IECHO CTT: the tool can also be named as creasing tool, for it is the tool for making crease on card paper and thin corrugated materials to make cartons and boxes.

Note: when making cartons or boxes, first to use the CTT for making crease, then to use UCT or EOT to cut through the material. Two cutting tools works together with the prerequisite of two cutting heads for the tools' installation.

Related video link on Youtube:

https://www.youtube.com/watch?v=dRbm0E8x_z8



IECHO KCT: the kiss cut tool, with its special structural design, can realize the function of cutting the top layer and also keep the bottom layer without being cut through. This tool is especially used for cutting self-adhesive papers like vinyls and labels.

Note: usually two cutting tools needed for making this job: KCT for half-cut, UCT for cutting through, which also means needs two cutting heads for the tools' installation.

Related video link on Youtube:

<https://www.youtube.com/watch?v=XSc2BgVihyg>



IECHO V-CUT: the V-CUT tool satisfies customers who want to cut the material with different angles. There are five popular angles 0,15, 22.5, 30, 45 available with the tool. The V-CUT mainly for cutting corrugated board for making display stands, or desk and chairs.

Note: the V-CUT and EOT or POT should be used together for making such works. V-CUT for cutting with angle; EOT/POT for cutting through the material, which also means two cutting heads needed for the tools' installation.

Related video link on Youtube:

<https://www.youtube.com/watch?v=HDSuCuXYUcM>

